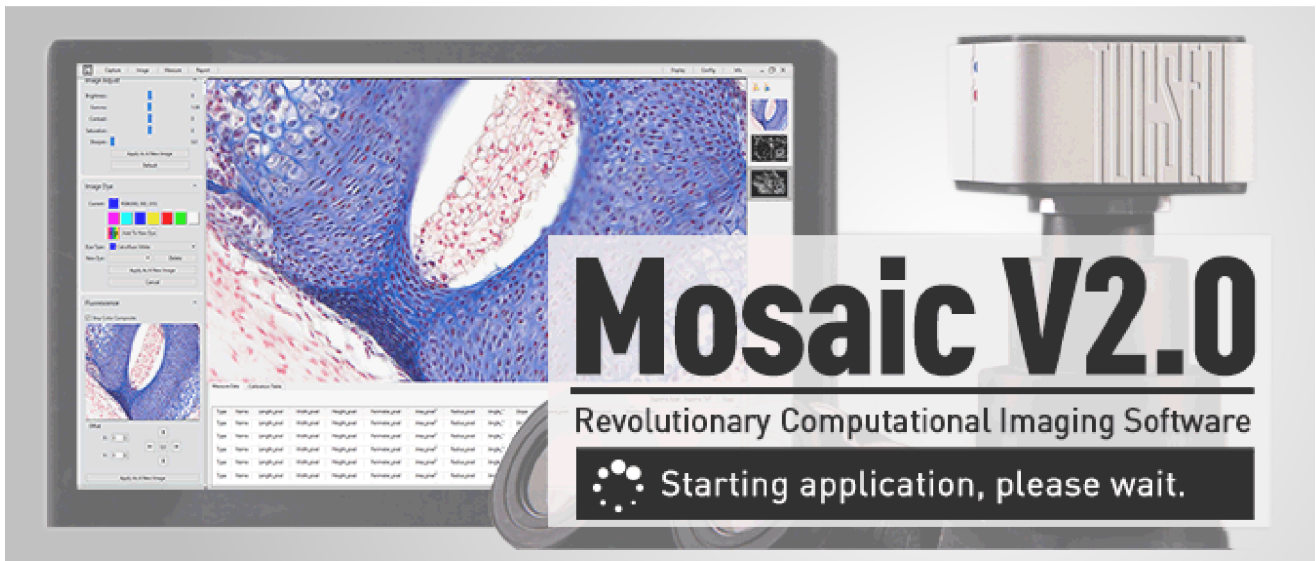
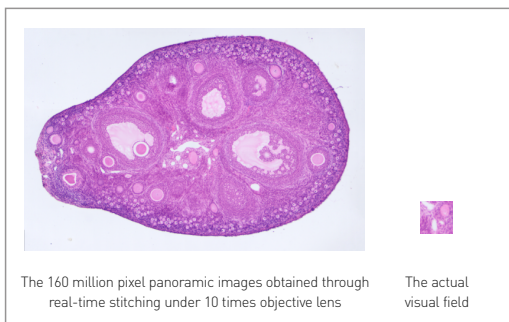


MiChrome Microscope Camera

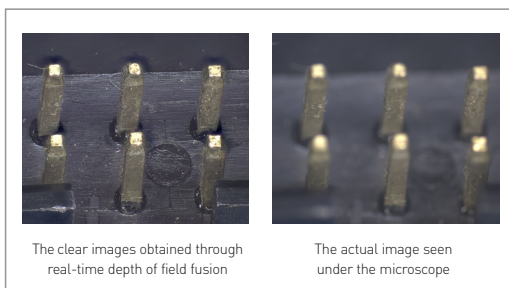
Computational Imaging Solutions



Real-time image stitching



Real-time depth-of-field fusion



Learn more ?

Scan the QR code on the right
Enter the product link



Product Model	MiChrome 5 Pro	MiChrome 20	MiChrome 6
Shutter Mode	Global	Rolling	Rolling
Sensor Model	IMX264LQR-C	IMX183CQJ-J	IMX178LQJ-C
Sensor Type	CMOS	CMOS	CMOS
Sensor Size	2/3"	1"	1/1.8"
Color/Mono	Color	Color	Color
Pixel Size	3.45x3.45(μm)	2.4x2.4(μm)	2.4x2.4(μm)
Resolution	2448(H)x2048(V)	5496(H)x3672(V)	3072(H)x2048(V)
Frame Rate	35fps@5MP	15fps@20MP	40fps@6MP
Exposure Settings	Support auto/manual exposure, exposure time: 0.13ms-15s		
Other Settings	Auto: color scale, white balance Manual: gain, noise reduction, gamma, flat field correction		
Color Temperature	2000-15000K		
Picture Format	JPG/PNG/TIFF		
Data Interface	USB3.0		
Optical Interface	Standard C Mount		
Multiple Cameras	Supports 4 Cameras Simultaneously		
PC Operating	Software: Mosaic V 2.0 System : Windows/Linux/Mac		
PC Configuration	CPU: Intel Core i5 or better(Quad or more Core), RAM: 8G or more, OS: Windows 7/8/10 64bit		
Size & Weight	Size: 68x68x46mm Weight: 330g		



Tucsen Photonics Co., Ltd.

Corporate Headquarters (China)
Email: support@tucsen.com Tel: + 86-591-88194580

Europe/North America OEM/ODM Support:
Email: mikeblake@tucsen.com Tel: +1-520-203-2643