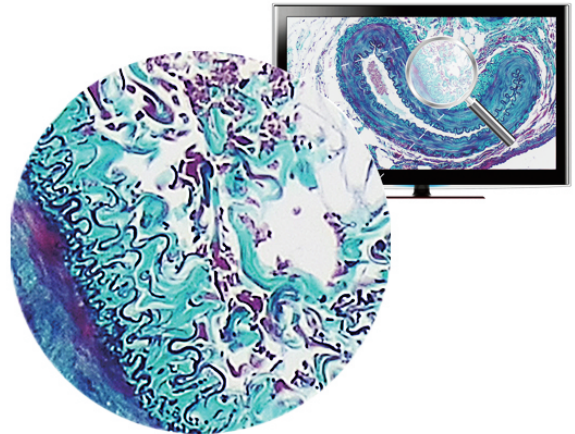


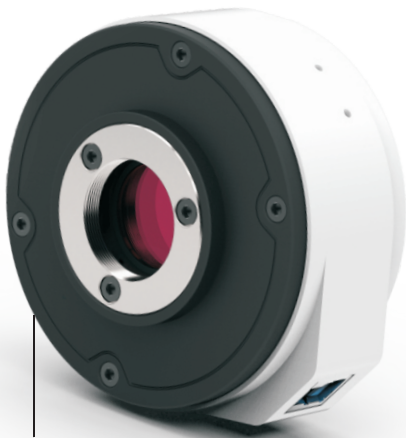
USB3.0 CMOS Camera Built-in ISP

DigiRetina 16

- 16MP high performance scientific camera
- Superb smooth and professional image processor, RAW data output
- Capture sharp images with accurate color rendition
- Range from 1800 to 10000 color temperature option



High Precision
Color Reproduction Ability



High Resolution
16 Mega pixels

High Speed USB 3.0
25fps@4MP

Model	DigiRetina16	DigiRetina500	DigiSwift
Sensor	CMOS	CMOS	CMOS
Sensor Size	1/2.33"	1/2.5"	1/2.7"
Image Processor	Built-in ISP	Built-in ISP	Built-in ISP
Image Transmission	High-speed (FPGA+DDR)	High-speed (FPGA+DDR)	High-speed (FPGA+DDR)
Pixel Size	1.335µm x 1.335µm	2.2µm x 2.2µm	3µm x 3µm
Resolution	4608x3542 2304x1728 1600x1200 1028x960	2584x1936 2040x1528 1592x1192 1016x760	2304x1296 1920x1080
Frame Rate	5fps@16MP 25fps@4MP 30fps@2MP 30fps@1.2MP	15fps@5MP 25fps@3MP 30fps@2MP 35fps@0.8MP	30fps@3MP 30fps@2MP
Scan Mode	Progressive	Progressive	Progressive
Exposure Time	1ms-999ms	1ms-999ms	1ms-33ms
Exposure Mode	Auto/Manual	Auto/Manual	Auto/Manual
White Balance	Auto/Manual	Auto/Manual	Auto/Manual
Color Temperature	1800K-10000K	1800K-10000K	—
Noise Reduction	3D	3D	3D
Setting	White Balance, Gamma, Noise Reduction, WDR, Exposure Time, Gain.	White Balance, Gamma, Noise Reduction, WDR, Exposure Time, Gain.	White Balance, Gamma, Noise Reduction, WDR, Exposure Time, Gain.
Operating TEMP	0-60	0-60	0-60
Operating Humidity	45%-85%	45%-85%	45%-85%
Compatible System	Window/Linux/Mac	Window/Linux/Mac	Window/Linux/Mac
Optical Interface	Standard C-Mount	Standard C-Mount	Standard C-Mount
Data Interface	USB3.0, compatible with USB2.0	USB3.0, compatible with USB2.0	USB3.0, compatible with USB2.0
PC Software	TCapture	TCapture	TCapture